

Healthcare Portfolio

ASIA

B+H

Americas
Calgary · Seattle ·
Toronto · Vancouver

Asia
Hong Kong
Ho Chi Minh City
Shanghai · Singapore

Middle East
Dubai

www.bharchitects.com



Cover image & this page:
Changi General Hospital, Integrated Building, Singapore



CONTENTS

Firm Profile 01

Firm Overview. 04

Healthcare Capabilities. 06

Expertise in Global Healthcare Projects. 08

P3 Capabilities for Healthcare. 10

Our Global Healthcare Leaders. 12

Healthcare Experience 17

Asia 21

The Americas 75

Middle East and North Africa 99

Additional Information 105

Latest Update: August 2017



Changi General Hospital, Integrated Building, Singapore



FIRM PROFILE

ONE OF THE
TOP 100
ARCHITECTURE FIRMS
IN THE WORLD

WORLD ARCHITECTURE TOP 100, JANUARY 2017



ONE OF THE
TOP
100 GIANTS
IN THE WORLD

INTERIOR DESIGN GIANTS, JANUARY 2017

Firm Overview

With a legacy of over 60 years of achievement in the built environment, B+H Architects is an award-winning full-service architecture and design firm

recognized for the delivery of sustainable design, problem-solving and construction administration skills to large-scale, technically complex projects around the world.

A global practice with studios in Toronto, Vancouver, Calgary, Seattle, Shanghai, Hong Kong, Singapore, Ho Chi Minh City and Dubai the work of B+H spans all sectors - commercial, entertainment, healthcare, hospitality, industrial, institutional, residential, retail, sports and transportation.

Our reputation for award-winning design leadership is based on principles of sustainability, innovation and practical design solutions. Known for an aptitude with scale and complexity, B+H is currently managing nearly nine million square metres of construction totalling almost \$8 billion.

Our reputation for award-winning design leadership is based on principles of sustainability, innovation and practical design solutions.

B+H clients are global leaders in a wide range of sectors. Recent and current projects include the RBC Centre [the first triple-A office building of over 1 million s. f. to achieve LEED Gold NC standard in Canada]; Microsoft's new Research and Development Campus in Shanghai; and Canada's largest privately financed biotechnology and life sciences research facility.

Other notable projects include the Toronto Dominion Centre, First Canadian Place, the Royal Ontario Museum, the Ottawa Congress Centre, The Archives of Ontario/York Research Tower, Sheridan Centre for Animation and Emerging Technologies, Queen's University's Beamish-Munro Hall, and the Metro Toronto Convention Centre's South Building.

Our services include:

Architecture
Interior Design
Planning & Landscape
Renewal
Compliance
Advance StrategySM

Our sectors include:

Commercial
Education
Entertainment
Healthcare
Hospitality
Industrial
Institutional
Mixed-use
Residential
Retail
Sports
Transportation



THE INTEGR

Changi General Hospital, Integrated Building, Singapore

Healthcare Expertise Highlights

50+
Years of
Healthcare
Design
Experience

90+ Projects
Worldwide

65% of
our work is with
repeat clients.

Design for over
1.2 million
square metre of
healthcare space
in the last 10 years
alone.

“NHS was pleased to work with B+H/STH on the planning and design for our new health complex in St. Catharines. The team brought expertise, **a strong work ethic, excellent communication skills and an international perspective of best practice to our planning.** They engaged with our staff and community, leading and participating in a multitude of planning and design sessions and truly embodied the NHS values of compassion, professionalism and respect. The process was excellent and the outcome a dream come true for our community.”

Gloria Kain
PAST CHIEF PLANNING AND DEVELOPMENT OFFICER,
Niagara Health System

Approximately 400 staff across 9 studios worldwide



AMERICAS

Toronto

481 University Avenue,
Suite 300
Toronto, Ontario
Canada M5G 2H4
T +1 416 596 2299

Vancouver

400 - 1706 West 1st Avenue
Vancouver, British Columbia
Canada V6J 0E4
T +1 604 685 9913

Calgary

215 10 Avenue SW, Suite 201
Calgary, Alberta
Canada T2R 0A4
T +1 403 265 3101

Seattle

225 Terry Avenue N.
Seattle, WA 98109
T +1 06 999 7364

MIDDLE EAST

Dubai

Suite No. 1501, API Tower
Sheikh Zayed Road
Dubai, United Arab Emirates
P.O. Box 25436
T +971 4 3889913
F +971 4 3889914

ASIA

Shanghai

23F, The Exchange - SOHO
299 Tongren Road
Shanghai, China 200040
T +86 21 3360 7861

Hong Kong

12/F Admiralty Centre Tower 1
Unit 1203B, 18 Harcourt Road,
Admiralty, Hong Kong
T +852 3158 2123

Singapore

Shaw Tower
100 Beach Road, #32-01/03
Singapore 189702
T + 65 6226 1353

Ho Chi Minh City

Resco Tower, Level 6
94-96 Nguyen Du Street
District 1
Ho Chi Minh City, Vietnam
T +84 8 3822 4497

Expertise in Global Healthcare Projects

With over 50 years of healthcare design experience and more than 90 projects worldwide, B+H provides leading expertise and ability in this sector. Our approach to architecture and design seeks to provide solutions that will enhance the experience for all users.

In addition to having a practice based on outstanding technical knowledge, excellence in architectural design, and adherence to client budgets and schedules, it is our ability to work closely with healthcare users, managers, patients and other stakeholders that has allowed us to successfully create facilities that promote wellness and healing.

As a part of an innovative Design-Build-Finance-Maintain consortium, B+H completed one of the largest new hospitals in Canada, for the Niagara Health System, and recently had a major redevelopment project for Markham

Stouffville Hospital featured in Healthcare Design's Annual Architectural Showcase. The firm's rising South East Asia success story includes current work with the Gleneagles Medini Hospital, Malaysia.

B+H provides all aspects of design consulting services, including programming, master planning, feasibility studies, healthcare planning, operational consulting, design, construction documentation, contract administration, field review, interior design and the management and coordination of multi-discipline consultant teams.



GLOBAL EXPERTISE

1. Gleneagles Medini Hospital
Iskandar Johor, Malaysia
International design
competition winner
Size: 130,064 m², 300 beds
Status: Completed in 2015
(B+H + STH)

2. Changi General Hospital,
Integrated Building, Singapore
Size: 60,970 m², 280 beds
Status: Completed in 2014
(B+H + RDC)

3. St. Catharines Hospital and
Walker Family Cancer Centre
St. Catharines, Canada
Size: 89,187 m², 375 beds
Status: Completed in 2012
(B+H + STH)

P3 Capabilities for Healthcare

We are renowned for our expertise in delivering healthcare facilities in public-private partnerships [PPP/P3/AFP]. We understand the key challenges that impact facility design under various P3 models and are skilled at assembling winning teams, building consensus among stakeholders and maintaining the momentum to move these projects to successful completion.

B+H works in a variety of project roles across the various project phases including Planning, Design and Compliance [PDC]; as project architect in Design, Build, Finance and Maintain [DBFM] projects; and as part of fast-track teams. We are known for our ability to coordinate large design and construction teams and it is not unusual for us to manage between 20 to 40 consulting firms on a single project. We recognize the strengths that each consultant brings to the team and we value regional expertise.

B+H team members are increasingly invited to share their P3 project expertise to governments and at leading industry gatherings.

Our relevant experience includes the following projects:

- Niagara Health System - New St. Catharines Hospital (Completed, 2012), St. Catharines (B+H + STH)
- New Oakville Hospital (Bid), Oakville, Canada (B+H + STH)
- Centre for Mental Health and Addiction - DBFM Services (Bid), Toronto, Canada (B+H + STH)
- Markham Stouffville Hospital - Redevelopment (Phase 1 completed 2013/ Phase 2 completed 2014), Markham (B+H/Perkins+Will)
- Surrey Outpatient Facility (P3 Design Proposal, 2008), Surrey, Canada
- Kelowna General Hospital - Expansions (P3 Design Proposal, 2008), Kelowna, Canada
- Vernon Jubilee Hospital - Expansion (P3 Design Proposal, 2008), Vernon, Canada

We provide the following services for P3 projects:

Compliance

- Develop a functional program in consultation with the end users
- Develop block diagrams to support the functional program
- Prepare design documents, block schematics, and the Programme Specific Design Specifications (PSDS) as components of the Programme Specific Output Specifications (PSOS)
- Produce preliminary Sustainable Design reports
- Assist in expediting municipal planning approvals
- Assist in the preparation, evaluation and selection of RFP proponents
- Review and recommend acceptance of schematic design
- Review design development, construction documents and commissioning, completion and occupancy submissions by the project consortium

Design

- Schematic design
- Design development
- Construction documents
- Project management



GLOBAL EXPERTISE IN P3 PROJECTS

1. St. Catharines Hospital and Walker Family Cancer Centre (Completed, 2012), St. Catharines, Canada (B+H/STH); **2.** Markham Stouffville Hospital Redevelopment (Phase 1 completed, 2013), Markham (B+H/Perkins+Will); **3.** Surrey Outpatient Facility (P3 Design Proposal, 2008), Surrey, Canada; **4.** Kelowna General Hospital - Expansions (P3 Design Proposal, 2008), Kelowna, Canada; **5.** Vernon Jubilee Hospital - Expansion (P3 Design Proposal, 2008), Vernon, Canada

Our Global Healthcare Leaders



Karen Cvornyek
B.E.S, B.Arch, OAA, MRAIC
President | Regional Managing
Principal, Asia



Karen Cvornyek joined B+H as a Partner in 2002 and has been based in Shanghai serving as the President of B+H's China operations since 2003. In 2009, Karen became the President of B+H Asia, managing the company's China, Vietnam and Singapore studios. In 2011, B+H was awarded the HSBC International Business Award in the Leadership in International Trade's Asia-Pacific category, and in 2013 Karen was awarded the Governor General of Canada's Visit Medallion for enhancing the Canada-China relationship – both a reflection of Karen's leadership in the tremendous success of our Asia operations. Key healthcare projects include University of Toronto – Department of Chemistry Renovations, and St. Joseph's Health Centre Renewal.



David Stavros
B.Arch., OAA, MRAIC
Principal



David joined B+H in 1999 and was appointed as a Partner in 2005. He has expertise in conceptual design and design development of both large and small-scale institutional, educational, commercial and residential projects. David is an advocate of utilizing an interactive and participatory design process as the means of a higher level of design excellence. His key healthcare projects include the new St. Catharine's Hospital, Changi Hospital Integrated Building, Changi Hospital Medical Centre, SGH Mixed-use Development and Community Hospital, NUH Centre of Oral Health, Dalian Medical University Master Plan, Gleneagles Medini Hospital.



William P. Nankivell
B.Arch., OAA, Architect
AIBC, AAA, AIA, FRAIC
CEO



Bill was appointed to the position of Chief Executive Officer in January 2006. Since joining B+H in 1996 as a Partner, he has led the firm's growth in the fields of healthcare, life sciences and educational facilities design. He has guided successful projects across Canada and internationally, and promoted the firm's mission to deliver excellent value to clients through creative architecture, reliable project management and accountable sustainable design. His project expertise extends into pre-design fields (programming, feasibility studies, master planning) and new project development experience (public-private-partnership and design-build delivery methods). In his leadership role with B+H, he has been instrumental in expanding the firm's global platform in new regions and new service sectors.



Susanna Swee
MBA, B.Arch., RIBA, MSIA
Managing Principal, Shanghai



Susanna joined B+H Architects as a Partner in 2010. As an MBA graduate, Susanna successfully combines her business acumen with her architectural experience. She has more than 20 years of architectural and interior design experience with major projects in Asia including master planning, healthcare, commercial and residential developments, and Institutional buildings. In the last 6 years with B+H, Susanna has been actively involved in healthcare projects in Asia. She has been instrumental in leading the teams to successfully win major healthcare projects in Asia. The relevant healthcare experience includes Gleneagles Medini Hospital, Shanghai International Medical Centre, Taiwan Far Eastern Memorial Hospital, Changi Hospital Integrated Building, Changi Hospital Medical Centre, SGH Mixed-use Development and Community Hospital, NUH Centre of Oral Health.



Bruce Knapp
B.Arch, B.A., Architect AIBC
Managing Principal |
Healthcare Director, Vancouver



Bruce joined B+H in 2012, bringing with him extensive experience in the leadership, design and execution of a wide range of complex healthcare, research and university facilities including ambulatory care, acute care, rehabilitation, seniors complex care as well as institutional, mixed-use, recreational, resorts, waterfront developments and themed-attraction projects. He has worked in architecture for more than 25 years, serving as Founding Principal, Partner and Managing Partner for several noted Vancouver firms. Bruce was the Project Director for the \$350 million Kelowna Vernon Hospitals P3 project from inception to completion, as well as Bid Leader for the \$150m Surrey Outpatient Facility and the \$90m Interior Heart and Surgery Centre P3 bid. Bruce led the feasibility studies for plots H8 and H9A SGH, Singapore.



Robert Marshall
BA, MUP, RPP, LEED AP
Global Director,
Planning & Landscape



Robert joined B+H in 2011 as the Global Director of the firm's newly expanded planning, urban design and landscape practice. Robert has over 25 years of experience in design consulting services for a wide variety of clients in many different parts of the world. He has been responsible for the development of master plans for new cities in the Middle East and India, large private development plans across the Gulf Region and North Africa, regeneration plans and resort plans in Asia, Europe and the Middle East and a wide variety of master plans, campus developments and public facility development projects in the United States and Canada.

Our Global Healthcare Leaders



David Duff
B.Arch. (Registered Architect)
Senior Medical Planner



David joined B+H in the Singapore studio in 2016. With over 30 years of architectural design experience, David specializes in healthcare design and medical space planning. Prior to joining B+H, he has led numerous healthcare practice groups across USA and spent many years in China, having accumulated a wealth of medical planning & design experience in these regions. In particular, he was able to integrate western medical planning precepts into contemporary Chinese medical design in his China projects. A passionate individual, David has taught and mentored young architects in the pursuit of design excellence on both healthcare and higher education practices - grooming project architects, managers, and principals. He is also an accomplished speaker and author in several leading healthcare thought leadership symposiums and publications in Asia.



Chris McQuillan
MRAIC, LEED AP
Principal



Chris joined B+H in 2012, bringing with him 17 years of experience in healthcare, behavioural health and biomedical research facility design, programming and project feasibility analysis. His experience includes award-winning major projects in both the private and public sectors across Canada. His recent work has had a noted AFP focus, with extensive work on compliance, pursuit and delivery. Key projects have included the Centre for Addiction and Mental Health (CAMH), St. Joseph's Healthcare Hamilton, Humber River Regional Hospital, Women's College Hospital, Trillium and Credit Valley Health Sciences Centre, Mount Sinai Hospital, London Health Sciences, and Canadian Blood Services labs in Toronto and Calgary.



Gabriel Oproescu
M.Arch., Architect AIBC,
MRAIC, AIA Int'l, EDAC
Global Healthcare Director



Gabriel has over 30 years of senior executive medical planning experience and offers extensive experience in the design and development of healthcare facilities. He has completed master space planning, client/user meetings, medical planning and schematic design through construction documents for over 50 healthcare building projects including clinics, replacement facilities, acute care centres, orthopaedic specialty hospitals, behavioral and mental health facilities, ambulatory cancer centres, healthcare support for correctional institutions, surgery centres, women's centres and large university teaching facilities.



Elmutaz Elrabaa

B.Sc. Arch. Eng., PE-KSE, ESE,
LEED AP BD+C/ND, EDAC
Principal |
Director of Healthcare, Asia



Elmutaz joined B+H Architects in 2008. He has more than 15 years of extensive professional global experience with primary focus on large-scale institutional and healthcare projects. A LEED and EDAC accredited professional, Elmutaz has led expansive, globally structured multidisciplinary teams to deliver large-scale projects from inception, through all design phases to contract administration and client handover in Canada, Middle East & Asia. A firm believer in design excellence, and a strong advocate of evidence-based design in healthcare project, Elmutaz's understanding of the complexity of the operations in large-scale institutional healthcare projects allows him to develop comprehensive and collaborative work programs that ensures the successful engagement of all stakeholders.



Stéphane Lasserre

M. Arch INSA/ENSAIS,
Registered in France - 074120,
PhD in I.T., LEED AP BD+C
Principal



Stéphane directs the local team in B+H Singapore. He joined B+H in 2005, having worked in both the Toronto and Shanghai studios before taking the helm in his current role. Stéphane has more than 12 years of project experience in mixed use, institutional, commercial, residential, healthcare and hospitality developments. As chief designer and project director, he has led teams in master planning, architectural and Interior design projects throughout France, Canada and Asia. With his hallmark of excellence in design, he has acquired diverse projects experience under his leadership. Relevant healthcare experience include: Centre for Oral Health, National University Hospital, Singapore; competition projects including Kelowna Outpatient Hospital, Canada and Surrey Outpatient Hospital, Canada.



Olivier Lopion

M. Arch., B. Eng(civil), OAIDF
Principal



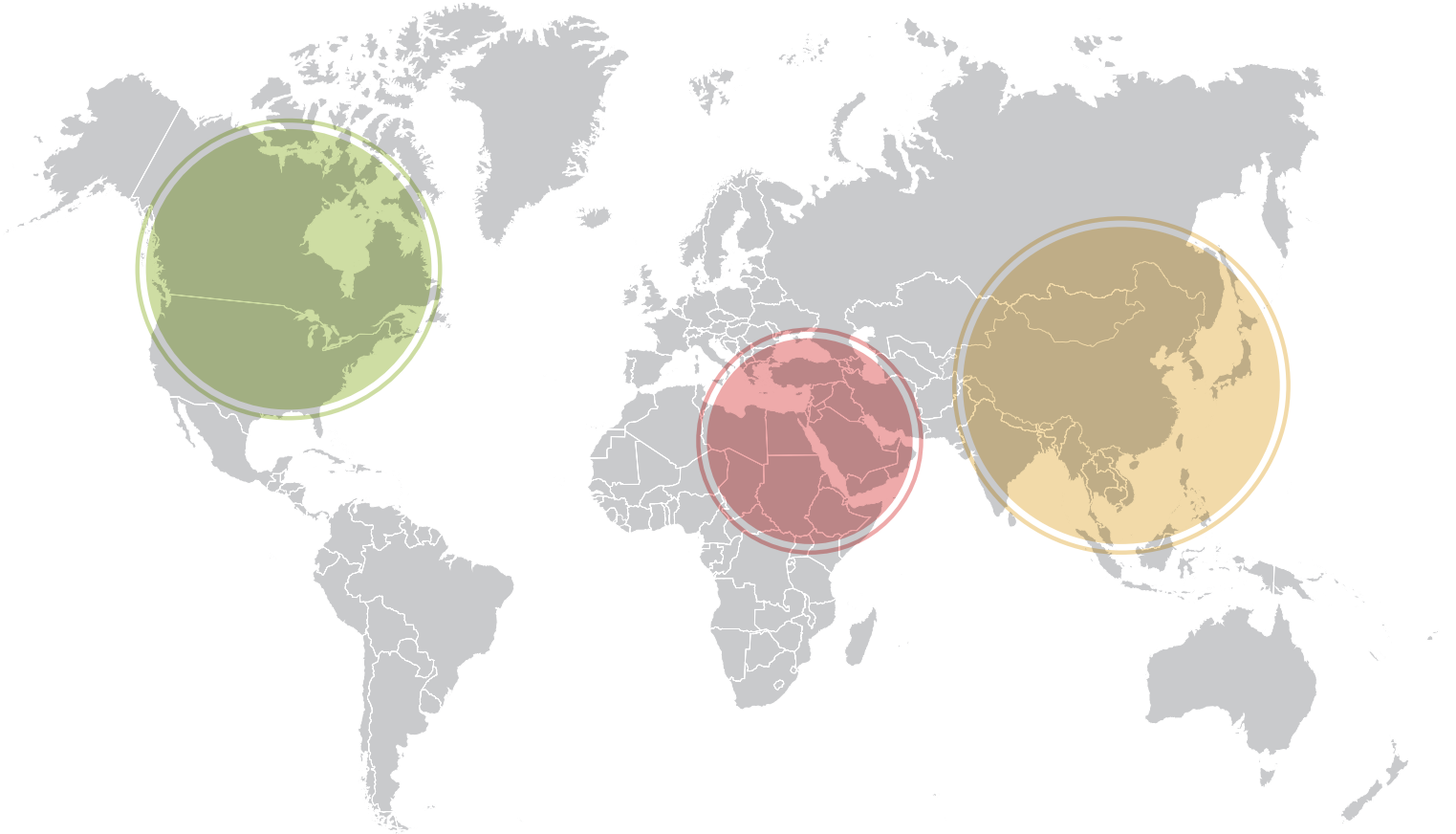
Olivier joined B+H Asia in 2008. After four years in Shanghai working on large-scale projects, he joined the Singapore office and in 2014 became a Senior Associate and Design Director, Singapore. Holding both Architectural and Civil engineering degrees, he has experience in all phases of design process and has led many design competitions worldwide. His ongoing responsibilities include leadership of design teams within the studio, coordination with client and consultant team members, and development of B+H presence in South East Asia. Relevant healthcare experience include: Changi Hospital Integrated Building, Singapore; Changi Hospital Medical Centre, Singapore; and New Elective Care Centre, Singapore



New Elective Care Centre (ECC) and National Dental Centre of Singapore (NDCS), Singapore

GLOBAL HEALTHCARE EXPERIENCE

Global Healthcare Experience



THE AMERICAS

Headquartered in Toronto, B+H has a history of successful healthcare project delivery in the region, and healthcare experts who work with other leaders in our global team.

MIDDLE EAST AND NORTH AFRICA

B+H has an established presence in MENA and an ability to deliver projects across an array of sectors.

ASIA

B+H was one of the first foreign architecture firms to establish a presence in China. Now in addition to our healthcare work in China our rising South East Asia success story includes a number of major project wins in a very short timeframe.







Gleneagles Medini Hospital, Iskandar Johor, Malaysia



ASIA



Gleneagles Medini Hospital

Location Iskandar Johor, Malaysia

Size 1,400,000 ft² | 130,064 m², 300 beds

Status Completed in 2015

Client Pantai Hospitals Sdn Bhd (Parkway Group)

B+H in collaboration with STH

B+H+STH designed this 300-bed complex which will be built in 3 phases on a 14-acre site. Regional materials will enhance the building exterior and tie the hospital to the architecture and imagery of other iconic buildings throughout the region. Selective use of glass on the facades will project an image of openness and offer daylight and views. The design includes commitment to sustainability and provides a healing environment which also maximizes healthcare efficiencies. Guiding principles tantamount to the project include: a

welcoming and inviting environment; a thorough master plan strategy accommodating growth and future use; clear separation of spaces per clinical services and user groups; identifiable and readable major entrances; controlled and clear vehicular circulation; clear internal and external circulation; a positive work environment promoting health; a layout that anticipates change with flexible design; appropriate architecture language and expression; and finally, a healing environment with landscape and natural light.





Changi General Hospital, Singapore (Integrated Building & Medical Centre Building)

Location Singapore

Size 656,281 ft² | 60,970 m², 280 beds

Status Integrated Building was completed in 2014, Medical Centre Building is under construction

Client MOH Holdings Pte. Ltd

B+H in collaboration with RDC

The design features of the new Integrated Building and the new Medical Centre Building are the demonstration of an approach that is at once patientcentric, age-friendly, flexible and sustainable. It represents the first stage in the re-imagining of the Changi General Hospital as a community hub for wellness and healing. We approached the campus design as a whole, working towards optimizing operational efficiencies through a comprehensive functional planning approach focusing on key adjacencies, building linkages and opportunities for future expansion. The centre portion of the Changi General Hospital site has been re-purposed as a landscaped open space framed by the existing Changi General Hospital and new MC building. Similarly, the

Integrated Building site has been developed with an emphasis on ground level open space consistent with the shared public usage and social care/community services focus of these areas.

Awards

2017 BCA Construction Excellence Award

2015 Certified and Awarded the Universal Design (UD)

Mark Gold^{PLUS} Award

2014 Certified and Awarded BCA's Building

Information Modelling (BIM) Gold^{PLUS}

2014 Certified and Awarded Green Mark Platinum



Changi General Hospital, Integrated Building, Singapore





Changi General Hospital, Medical Centre Building, Singapore



National University Centre for Oral Health, Singapore (NUCOHS)

Location Singapore

Size 39,000 m², 298 dental chairs

Status Under Construction

Client National University Hospital (S) Pte Ltd.

B+H in collaboration with A61

Scheduled to be opened in 2019 and targeting BCA Green Mark Platinum award, the NUCOHS will be able to accommodate about 500 patients per day when it is fully operational. This 34,000 sqm GFA integrated healthcare centre would consolidate multi-disciplinary clinical dental services, education and research facilities under one roof.

The design of the building activates a Campus Green with landscaped civic spaces linking NUCOHS to the National University Hospital, Singapore (NUHS) campus. It is connected to the public transportation network through a network of bridges and covered walkways.

The treatment floors allow close cooperation between teaching and treating with a mix of tutorial rooms, open-office concept low partition dental chairs aggregated into pods, closed operatory and flexible waiting areas. Interior spaces combine high ceiling with extensive high-performance curtain walls that maximize natural light penetration and allow a better connection to the nature. The education, administration and research wings share a landscaped courtyard at the upper levels of the building with naturally-ventilated circulation, pre-function zones and student common spaces.

Awards

Gold (Design) - BCA Universal Design Mark Award





Singapore General Hospital Outram Community Hospital

Location Singapore

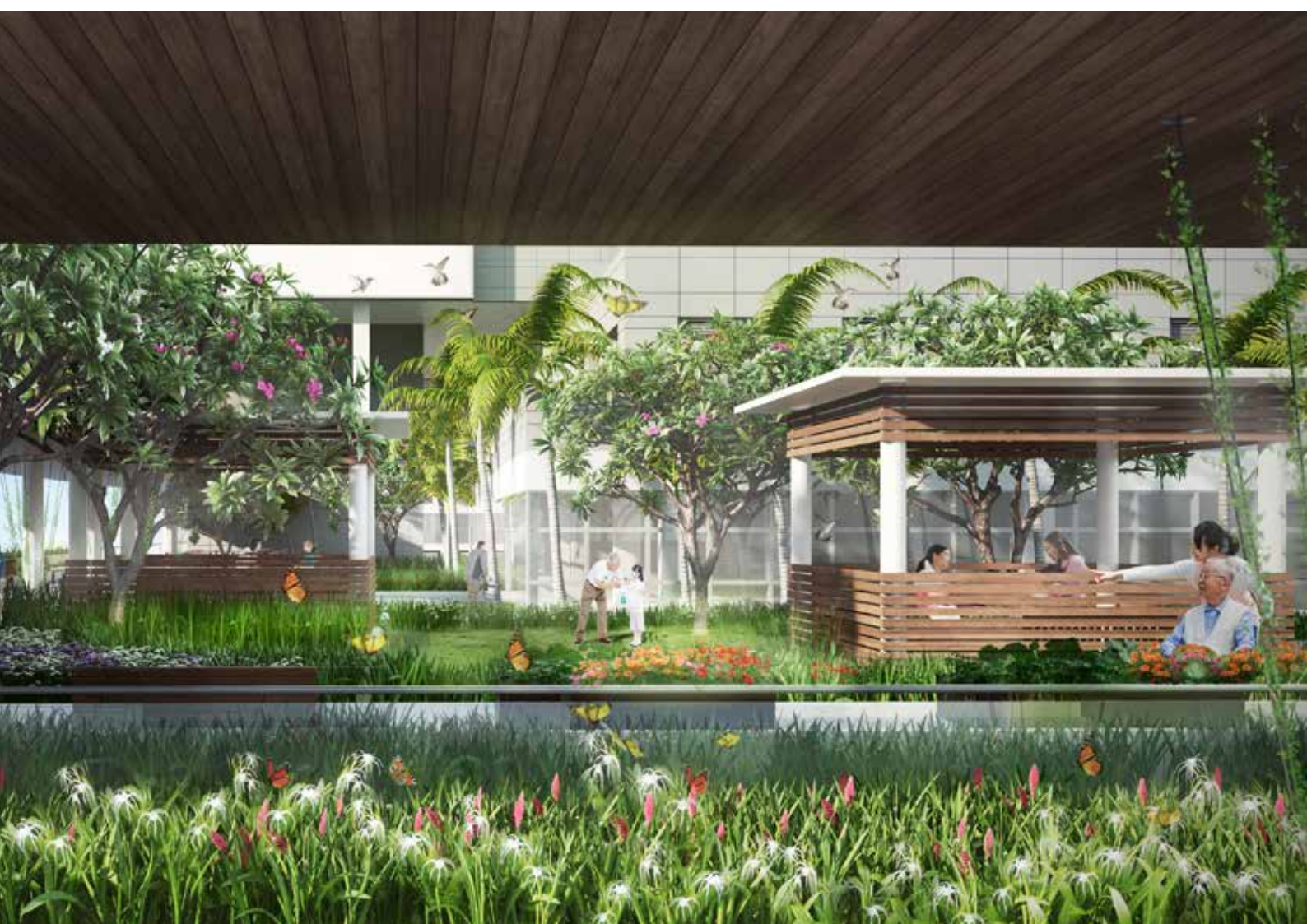
Size 100,000 m², 500 beds

Status Under Construction

Client National University Hospital (S) Pte Ltd.

B+H in collaboration with CIAP

This project is the latest project forming part of the Outram Park Master Plan for Singapore General Hospital. The mixed use development includes 500 community hospital beds, many of which are required by MOH guidelines for public hospitals to be natural ventilated, multi-bed wards with the capability of later conversion to air-conditioned wards. The development comprises a ward block and an administrative block over a rehab and outpatient podium. The basement houses the new central logistics centre for the entire hospital, 960 parking bays and tunnel and bridge links to existing and future phases of the master plan. The project will be Green Mark Platinum certified.





Mixed-Use Development on Plot H9A at Outram Medical Campus, Singapore

Location Singapore

Size Site area: 8,500 sqm | GFA: 58,000 sqm,
73-bedded observation area: 73 beds | Acute medical wards with estimated: 170 beds

Status Design In Progress

Client Ministry of Health, Singapore

B+H in collaboration with RDC

The H9A at Outram development provides Accident & Emergency services with acute medical care in a patient-centric environment to support the overall wellness, safety, dignity, and privacy of the patient and patient's next-of-kin. It will house a variety of components including a two-level Accident & Emergency facility with a hospital decontamination system, a 73-bedded observation area, acute medical wards with estimated 170 beds and other facilities including a mortuary, a server room, 1,200-capacity administrative offices, a 300 car parking lots and a Central Utilities Plant that services the majority of the campus. Located on the complex campus of Singapore General Hospital (SGH), the project

focuses on the connectivity and the integration with existing blocks, and the continuous model of care. The design reflects universal design & sustainable design strategies while achieving a lean & efficient workflow for the different clinical components. Connection to nature with roof top gardens, abundance of natural light with materials & colour palette that mitigates patient stress as well as north-south building orientation towards prevailing winds that allows for naturally-ventilated wards are some examples of design techniques used. Targeting BCA Green Mark platinum standard, the project is expected to complete in 2020.





Myanmar Shwe Taung Group Hospital

Location Yangon, Myanmar

Size 468,746 ft² | 43,548 m²

73-bedded observation area: 73 beds | Acute medical wards with estimated: 170 beds

Status Design Complete

Client Shwe Taung Group





New Elective Care Centre (ECC) and National Dental Centre of Singapore (NDCS)

Location Singapore

Size 157,529 m², 602 beds

Status Design Competition (Finalist)

Client Ministry of Health Singapore

B+H in collaboration with Aedas

As outlined in the Outram Medical Campus Master Plan, 'Green Field' and 'Capacity' are the key objectives to further improve and nurture the existing Singapore General Hospital (SGH) campus, ultimately aimed to address the growth in national health care demand for the next 2 decades.

The plan allocates seamlessly integrated, high-density development along the perimeter of SGH Campus including Plots H1A and H1B where the new Elective Care Centre (ECC), National Dental Centre of Singapore

(NDCS) and finally the Phase 2 of the SGH are proposed.

The vision is to develop a 'vertical-city' - a high density mixed-use development with various functions at different levels. These numerous functions include patient accommodations, clinical service facilities, surgical facilities, logistics and support, NDCS, convertible levels from carparks to future A+E, and a multistorey basement carpark, and expression; and finally, a healing environment with landscape and natural light.





New Elective Care Centre (ECC) and National Dental Centre of Singapore (NDCS)





Woodlands Integrated Healthcare Campus

Location Singapore

Size 268,000 m² | 1,800 beds

Status Finalist in 2015

Client Ministry of Health Singapore

B+H in collaboration with Aedas

The Woodlands Integrated Healthcare Campus includes an acute hospital, a community hospital and a nursing home. The campus of facilities will serve the anticipated increase in demand for healthcare services in the northern region of Singapore. There will be up to 1,800 beds in the two hospitals and nursing home. The project will open in phases beginning in 2022.

Our vision is not simply to design a Hospital campus, rather it is an Oasis. The “Oasis” Metaphor is used to guide our proposal. An “Oasis” is not just an area of refuge and security it is also a vibrant, active and alive community. It is seen as a social magnet for the residents living in the northern part of Singapore.

At the heart of the design proposal is a person-centred cluster of care villages organized to create a

fully integrated healthcare oriented community. The design narrative is rooted in adaptability, flexibility and accessibility that emphasize the role of family relationships, social activities and healthy life style in society’s wellbeing.

Central to the design concept is the healing power of nature. Our proposal emphasizes the connection to the existing park and integrates it as an extension of the care villages. Outdoor sheltered sequence of gardens, courtyard, lawns, path, water features and outdoor gyms are provided for the benefit of the entire community old, young, staff, patients and visitors; a sensory dynamic and alive campus where wellness is stated in a safe environment supported by learning and constant innovation.





Sengkang Integrated Regional Hospital, Community Hospital and Specialist Outpatient Clinics

Location Singapore

Size 2,152,782 ft² | 20,000 m², 450 beds

Status Design Competition in 2012

Client Ministry of Health Singapore

B+H in collaboration with CIAP

The Sengkang Hospital Project is a key element in the implementation of a regional healthcare network for North-East Singapore. The design applies functional yet innovative patient-focused care models across the continuum of care; facilitates integration between acute care, community hospital and the community; and provide a therapeutic patient, family and staff-centric

environment designed to improve health care outcomes and reduce length of stay. The design incorporates the employer's mission to deliver the over-arching care philosophy of HOPE: Holistic, Outcome driven, Patient-centric, Embedded (in an integrated healthcare network), and Sustainable.





National Skin Centre and National Healthcare Group HQ

Location Singapore

Size NSC Existing 9,850.98 m², new - 19,255.82 m² | NHG new - 11,850 m²

Status Design Competition in 2013

Client Ministry of Health, Singapore

B+H in collaboration with A61

The National Skin Centre expansion announces a new Southern Gateway to the proposed master plan for the Health City @ Novena, using the topography to subtly frame the approach using rising terraces and cantilevered building masses carefully portioned to draw you in to the space. The new building is expressed as two massing components. The lower building element comfortably relates the National Skin Centre (NSC)

block in scale and massing to the existing building providing easy linkages, courtyards and expansion potential whilst the upper block provides a unique identity and expression to the National Healthcare Group, (NHG). The massing aims to maximize the development potential of the available land without overwhelming the important public spaces it helps define.





HUKM Children's Hospital

Location Kuala Lumpur, Malaysia

Size 88,966 m² | 957,622 ft²

Status Design competition in 2012

Client IJM Construction SND BHD

The building is designed to suit the site conditions, all areas are designed to achieve good cross ventilation and natural lighting while the master plan allows flexibility for horizontal expansion. The design considers providing quiet, comfortable areas with outlook to outdoor environment easily accessible from clinical areas to be used by patients and their visitors to escape the clinical environment. The design is orderly composed of building elements that are stimulating yet combine good standards of space, height, form, scale and "green" materials in line with it's function and surroundings.





Hoc Mon General Hospital

Location Ho Chi Minh City, Vietnam

Size 863,265 ft² | 80,200 m²

Status Competition

Client Ho Chi Minh City Health Department

Designed to be a world-class healthcare facility, the new Hoc Mon General Hospital will provide state-of-the-art equipment and high quality health care to the Hoc Mon District in Ho Chi Minh City and the surrounding area. The hospital design embraces the principles of urban design by focusing on the importance of a hospital within a community. It creates a beautiful new

architectural statement for Hoc Mon that respects and celebrates the existing history of the site. The site plan was developed with a site traffic strategy that divides service and emergency vehicles from daily visitors and outpatient circulation. The environment was designed to create a patient-centred, uplifting atmosphere and acts as an intrinsic part of the healing process.





Mien Dong International General Hospital

Location Binh Duong, Vietnam

Size 12.76 Ha (3 phases) - 1000 beds

Status Phase 1: Under Construction / Interior Design - In Progress

Client Becamex IDC

Located at Thuan An District, Binh Duong Province with GFA of 12.76 ha including 4 floors (3 phases) and invested by Becamex ID. With the high economic growth of Binh Duong Province, quality of residents' lives has improved; therefore, need for medical treatment service quality is also increasing. Besides, the demand for medical service quality is highly desired by high income earners, foreigners living, working and traveling in Vietnam.

This large-scale, synchronous modernity hospital will provide medical treatment services to all types of people, including foreigners working or traveling in Binh Duong Province and the vicinity, reducing pressure on regional hospitals as current. B+H was retained to provide Full Scope Interior Design Services for "GH002 Block - 164 Beds" Facility.





Shanghai International Medical Centre

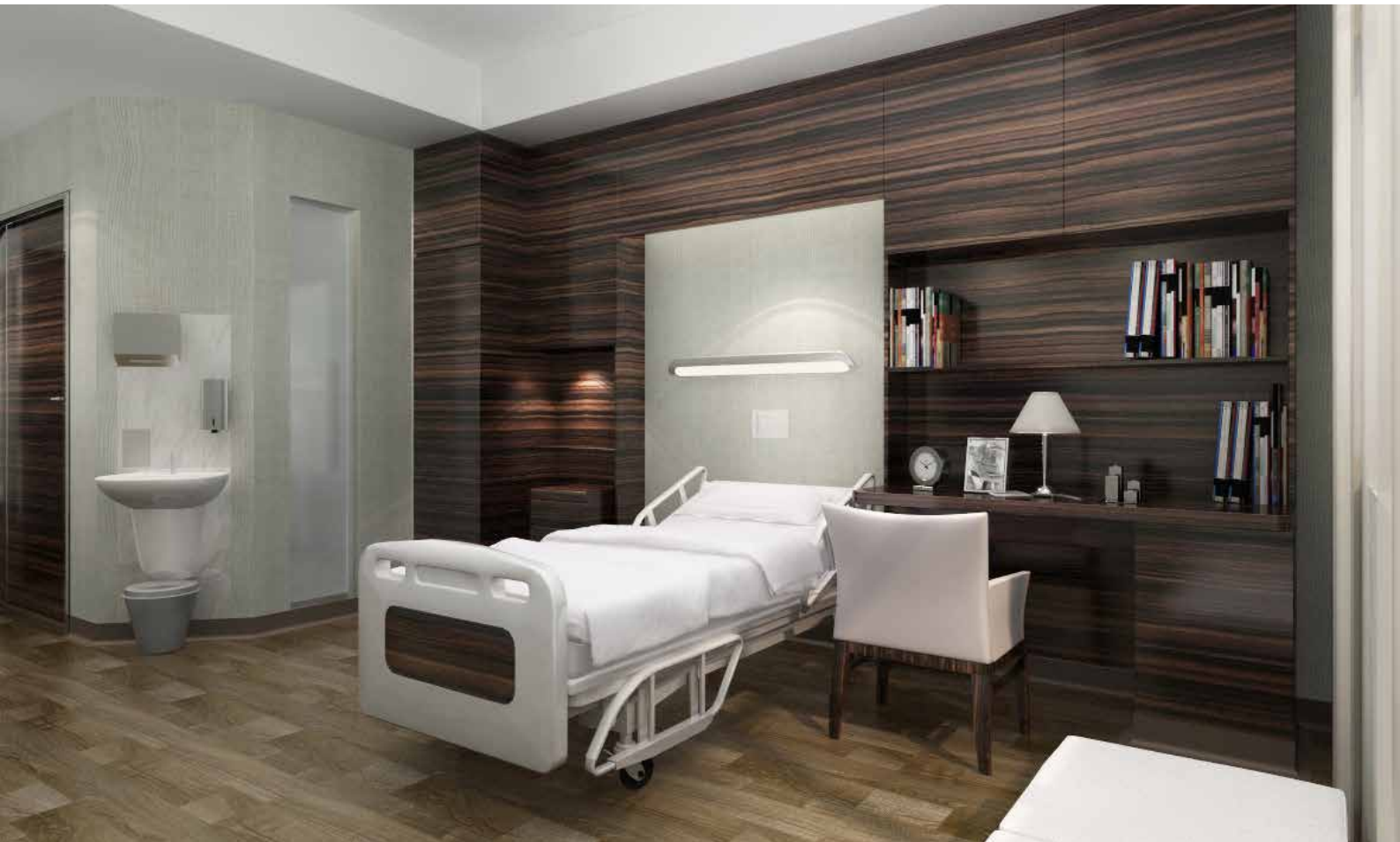
Location Shanghai, China

Size 20,000 m², 450 beds

Status Completed in 2014

Client Shanghai International Medical Centre Investment Management Co., Ltd.

Our interior design approach integrated the Magnolia motif and colour scheme and utilized a Modernist and minimalist style to create a pleasant and comfortable atmosphere for the whole development. Design scope for this project includes the interior design of all the public spaces, wards and clinical areas.





Tongji Hospital

Location Kunshan, China

Size 581,680 ft² | 54,040 m²

Status Completed in 1998-2001

Client Shanghai Greenland Group

Located within a sustainably-designed residential development, this concept design features 510 inpatient beds to serve older age groups and comprehensively addresses medical, health, and rehabilitation needs. The design allows the facility to be built in two phases.



Changning District Central Hospital

Location Shanghai, China

Size 667 ft² | 62,710 m²

Status Completed in 1998

Client Changning District Central Hospital

Covering a 46-acre site in Shanghai, this 650-bed complex include facilities for internal medicine, surgery, gynaecology and obstetrics, paediatrics, cancer treatment, orthopaedics, and infectious diseases; as well as separate programs for foreigners and traditional Chinese medicine. The firm was awarded this project through a design competition.



Far Eastern Memorial Hospital, Taiwan

Location Taiwan

Size 101,719 ft² | 9,540 m²

Status Under Construction

Client Taiwan Far Eastern Memorial Hospital

Far Eastern Memorial Hospital was built in 1981 by the Far Eastern Group to serve the people of Banciao and Tuchien in Greater Taipei. Over the years, it has increased significantly in size and scope and also serves as a medical referral center for Taiwan. It has 44 departments and continues to lead the country in many fields of Medicine. The hospital includes a new wing to cater for expansion of the present facilities

due to crowding and to prepare the hospital for a possible added focus in Private patient healthcare. B+H's design scope for this project includes interior design and medical planning for 1F, 15F and 3 mock-up rooms; review of medical planning for the New Wing; review of flow between Old and New Wings; and review of Local Designer's design.



Dalian Medical University Master Plan Competition

Location Dalian, China

Size 114 hectares

Status Competition in 2003

Client Dalian Medical University

This design was based upon a north-south pedestrian axis which steps down with the existing terrain and terminates in a viewing platform cantilevered over the water's edge. The plaza, articulated with steps, ramps, landscaping, sculptures and water elements is the heart of the campus area. Along the plaza are the education

facilities, while dormitory, dining and related support facilities are located to the east. Major buildings such as the stadium and gym are located close to Lushun Road to accommodate public use. A future convention centre and pharmaceutical industrial park are also included in the design.



Gleneagles Shanghai International Hospital (GSIH) in Hongqiao Medical Center

Location Shanghai, China

Size 85,000m² (above ground 64,400m²), <500 beds

Status Design Competition in 2015 (finalist)

Client Pantai Hospitals Sdn Bhd (Parkway Group)

B+H in collaboration with STH

Gleneagles Shanghai International Hospital is developed by Gleneagles Shanghai International Hospital Co., Ltd - a joint venture company of Medical Resources International Pte Ltd, Hongxin Medical Investment Holding Co. Ltd and Shanghai Shangxin Yijian Investment Center (Limited Partnership).

Gleneagles Shanghai International Hospital (GSIH) is

the only tertiary / multiple-specialty hospital located in New Hong Qiao Medical Centre, which comprises of 4 specialty hospitals, 1 public hospital and 1 shared service center.

B+H joined the design competition in 2014 as the lead architect for this project.





Columbia Shanghai Kaiyuan Orthopedic Hospital

Location Shanghai, China

Size Phase I: 17,410m², Phase II: 42,780 m²

Status Design in Progress

Client Columbia China

Shanghai Kai Yuan Orthopedics Hospital is a Grade A Orthopedic Hospital. It brings international healthcare standards and has the ability to provide necessary specialty services in Shanghai. B+H's design scope included adding 10 ICUs, 2 clinic surgery and retrofitting the existing building.



INFORMATION 寻医台

COLUMBIA
UNIVERSITY MEDICAL CENTER
HOSPITAL



Columbia Shanghai Kaiyuan Orthopedic Hospital, China



日景透视图
DAY VIEW PERSPECTIVE

Columbia Wuxi Hospital

Location Jiangsu, China
Size 24,000 m²
Status Design in Progress
Client Columbia China

Based on the patient-oriented nursing concept, our design provides a naturally integrated atmosphere with a focus on safety and comfort for both patients and staff. The interior design process utilized integrated advanced design technology to develop a pleasant healing environment. The combination of natural light, color, artwork and views to landscape creates a space of serenity and privacy.





Columbia Jiaxing Hospital

Location Zhejiang, China

Size 100,292m², 500 beds

Status Design in Progress

Client Columbia China

Columbia Jiaxing Hospital is located in Jia Xing, and is a 500 bed general hospital developed in China by Columbia China. The development of the Columbia Jiaxing Hospital aims to provide patients with a favorable recovery place and evidence-based medicine, and provide the staffs with effective medical facilities. During the design, the designers need to consider the related Chinese national code which stipulate the establishment of foreign funded profit-making medical agency, and create a possibility of increasing the hospital's level after being put into operation.





Beijing Tasly Hospital

Location Beijing, China
Size : GFA 30,000m²
Status Design in Progress
Client Tasly Company

This Hospital will be the first hospital operated by Tianjin's major drug company Tasly. Our task was to develop a concept design for the project that would capture Tasly's company culture while providing a suitable environment for medical use. The idea of the design centers on nature and comfort. By focusing on lighting and materials that replicate elements commonly found in nature we created a pleasant patient journey while providing the staff with a comfortable work environment. The project is set to open in Beijing in 2017 and will be followed by other hospitals throughout the country.





Wellem Pediatrics Clinic (Xintiandi & Lujiazui Clinics)

Location Shanghai, China

Size Lu Jia Zui: 950 m²; Xin Tian Di: 465

Status Design in Progress

Client Wellem

B+H designed 2 clinics for Wellem in Shanghai: one in Lu Jia Zui of Pudong New District and one in Xin Tian Di of Huangpu District. Both clinics are comprised of children's wellness rooms, children's consultation rooms and communal waiting space. During the design process, great attention was paid to the public space. Timber interior design elements representing trees, leaves and animals were incorporated and arranged to create a playful and colourful atmosphere and overall a welcoming clinic environment.





Xiamen Sincere Healthcare Hospital

Location Fujian, China

Size 31,163 m²

Status Design in Progress

Client Xiamen Sincere Hospital Co., Ltd.

Sincere Hospital will provide high-end medical services for women and children during the perinatal-period and post-natal rehabilitation period. The interior design approach was to meet high-end hospital requirements for circulation and functionality, while incorporating elements that allow patients to feel comfortable and at home. Our design solution is open, humanized, green, convenient and efficient, creating a simple, elegant and distinctive spatial atmosphere. The 3H (Holistic care, Hotel style and Home-warm) medical concept is present in our design.





St. Catharines Hospital and Walker Family Cancer Centre, Canada



THE AMERICAS



St. Catharines Hospital and Walker Family Cancer Centre

Location St. Catharines, Canada

Size 960,000 ft² | 89,187 m², 375 beds

Status Completed in 2012

Client PCL Constructors Canada Inc.

Registered and targeting LEED Silver

B+H and Silver Thomas Hanley are joint venture architects

Plenary Health was selected as the preferred proponent by Infrastructure Ontario to design, build, finance and maintain this complex. The new 375-bed hospital consolidates acute and ambulatory services on a new site for the residents of St. Catharines and the immediate area. It provides new programs and services such as cardiac catheterization, cancer treatment and longer-term mental health services; improving access to these specialized services to local residents. The state-

of-the-art complex also introduces accommodates new services to the region, and is registered and targeting LEED Silver certification. B+H and Silver Thomas Hanley are joint-venture architects on the Plenary team.

Awards

Toronto Construction Association: 2012 Project Achievement Award





Markham Stouffville Hospital Redevelopment

Location Markham, Canada

Size 505,900 ft² | 47,000 m²

Status Phase 1 (construction) complete 2013 / Phase 2 (renovation) complete 2014

Client Markham Stouffville Hospital/Infrastructure Ontario

Registered and targeting LEED Silver

B+H is Architect and Prime Consultant and Perkins + Will is Associate Architect

In 2007, B+H Architects with Perkins+Will was retained to provide full Master Plan, Design and Compliance services on the basis that the project would be awarded as a design, build, finance and maintain contract. Following the completion of a Master Plan looking out to 2024 and assistance in the process of securing rezoning and site plan approval, the project was converted to a Build-Finance model with the B+H team providing full consulting services. The work involves a new wing of 382,250 square feet, plus renovations to 146,290 square feet of the existing 322,460 square foot facility. This project is registered and targeting LEED® Silver certification.

Awards

**Professional Engineers of
Ontario, York Chapter - Project
of the Year**





Ministry of Health, Trinidad and Tobago

Location Trinidad and Tobago

Size Port of Spain General Hospital (120,000m²), Eric Williams Medical Science Center (140,000m²) and San Fernando General Hospital (150,000m²)

Services Redevelopment Masterplans for Port-of-Spain General Hospital, San Fernando General Hospital and the Eric Williams Medical Sciences Complex

Status Completed in 2015

Client Ministry of Health Trinidad and Tobago

B+H with a team of international experts delivered an integrated, multi-disciplinary study for redevelopment of the clinical and physical infrastructure of the three largest hospitals in Trinidad and Tobago. Hospital data, leading practice research, demographics, evolving healthcare services and stakeholder input were researched and analyzed. From this study, hospital workload across 5, 10 and 25-year planning horizons were projected and a multi-phase Master Program was developed. At the same time the existing buildings,

engineering infrastructure, campus land use, circulation and organization were studied through site visits and drawing review. The findings were analyzed and recommendations made for the reuse and renewal of the three campuses. In the final stage strategies for modernizing the three campuses involving renovation, expansion and replacement were developed and reviewed with stakeholders. Final Masterplan options were delivered together with a Financial Analysis for the implementation of the preferred schemes.





Kelowna General Hospital*

P3 Design Proposal

Location Kelowna, Canada

Size 172,222 ft² | 16,000 m²

Status Design Completed in 2008

Client Stuart Olson Inc.

B+H is the Architect and Prime Consultants and MQN Architects are Associate Architects

Plenary Health was shortlisted by Partnerships British Columbia and the Interior Health Authority to respond to the request for proposal (RFP) phase of the competition to design, build, finance, and maintain the new Kelowna General Outpatient Hospital designed to include a general clinics area, surgical services, short-stay beds, renal services and outpatient diagnostic services; and an expansion of the Kelowna General Hospital Emergency Department designed to support the redevelopment of the outpatient hospital. B+H and MQN Architects worked in association as the Architects on the Plenary team.

*Kelowna and Vernon projects were submitted as two components of one bid



Vernon Jubilee Hospital*

P3 Design Proposal

Location Vernon, Canada

Size 75,283 ft² | 6,994 m²

Status Design Completed in 2008

Client Stuart Olson Inc.

B+H is the Architect and Prime Consultants and MQN Architects are Associate Architects

Plenary Health was shortlisted by Partnerships British Columbia and the Interior Health Authority to respond to the request for proposal (RFP) phase of the competition to design, build, finance, and maintain the Vernon Jubilee Hospital expansion. The design included a Diagnostic and Treatment Building designed to consolidate existing programs and allow future expansion. B+H and MQN Architects worked in association as the Architects on the Plenary team.

*Kelowna and Vernon projects were submitted as two components of one bid



St. Joseph's Health Centre Renewal

Location Toronto, Canada

Size 109,000 ft² | 10,130 m²

Status Completed in 2006

Client St. Joseph's Health Centre

B+H was responsible for a series of phased renovations that allowed St. Joseph's Health Centre to keep all programs in full operation throughout the duration of the project. Program elements completed include a new Emergency Department, Intensive Care unit, Pre- and Post-Anesthetic Care unit, Day Surgery, Rehab Department, Chemotherapy Suite, Community Health

clinics, redeveloped Main Entry, a 34-bed Mental Health Inpatient unit, and a Mental Health Day Hospital program. In addition, Glendale House, a former private residence on the grounds, was renovated and expanded to become a pavilion for Withdrawal Management services.





New Oakville Hospital

Location Oakville, Canada

Size 1,017,000 ft² | 94,482 m²

Status Design Completed in 2010

Client Halton Healthcare Service Corporation

B+H and Silver Thomas Hanley were joint venture architects on the Plenary Health Team.

B+H and Silver Thomas Hanley developed this design for a 400-bed, state-of-the-art greenfield hospital and healthcare campus offering a complete range of services: inpatient and outpatient care, cancer care, palliative care, ambulatory clinics, and emergency, surgery, maternity and mental health units. Targeting a minimum of LEED Silver and following evidence-based design principles, the design proposes a highly functional, staff-friendly hospital facility that would provide for the delivery of meaningful, patient-centred care. The campus design also includes walking paths and scenic ponds that can be enjoyed by those in the nearby neighbourhood.



Surrey Outpatient Facility P3 Design Proposal

Location Surrey, Canada

Size 192,490 ft² | 17,883 m²

Status Design Completed in 2008

Client PCL Constructors Canada Inc.

B+H and CEI Architects worked in association

Plenary Health was shortlisted by the Fraser Health Authority and Partnerships British Columbia to respond to the request for proposal (RFP) phase of the competition to design, build, finance, and maintain the new outpatient facility.

The new outpatient centre design provides a full range of scheduled outpatient services including day surgery, diagnostic imaging, express testing and medical clinics. It includes a primary health care clinic to deliver enhanced family practice services and cater for patients with chronic diseases.



Toronto-Sunnybrook Regional Cancer Centre Phase II Expansion

Location Toronto, Canada

Size 130,000 ft² | 12,150 m²

Status Completed in 1995

Client Sunnybrook Health Science Centre and Ontario Cancer Treatment and Research Foundation

Projecting a sense of calmness and well-being, the interior features a three-storey atrium which is an indoor garden containing waiting rooms, reception areas, and snack bar. Skylights and a glass wall at the atrium's south

end allow daylight to penetrate all three above-grade floors and provide views toward a ravine. The atrium also acts as a central orientation element which makes it easier for users to understand the Centre's layout.



Children's & Women's Health Centre of BC Master Plan Rezoning

Location Vancouver, Canada

Size 385,000 ft² | 35,770 m²

Status In progress

Client Partnerships BC Provincial Health Services Authority

B+H, in association with dys architecture, are the planning consultants for the long-range redevelopment plan of the 46-acre Oak Street Health Care Campus. Home to the BC Children's Hospital, Women's Hospital & Health Centre, and the BC Child & Family Research Institute, the 25-year

master plan envisages more than 1.1 million square feet of new space including an Acute Care Centre housing a new Emergency Department, Diagnostic and Treatment hub and paediatric inpatient units.



St. Joseph's Health Centre Our Lady of Mercy Wing

Location Toronto, Canada

Size 130,000 ft² | 12,080 m²

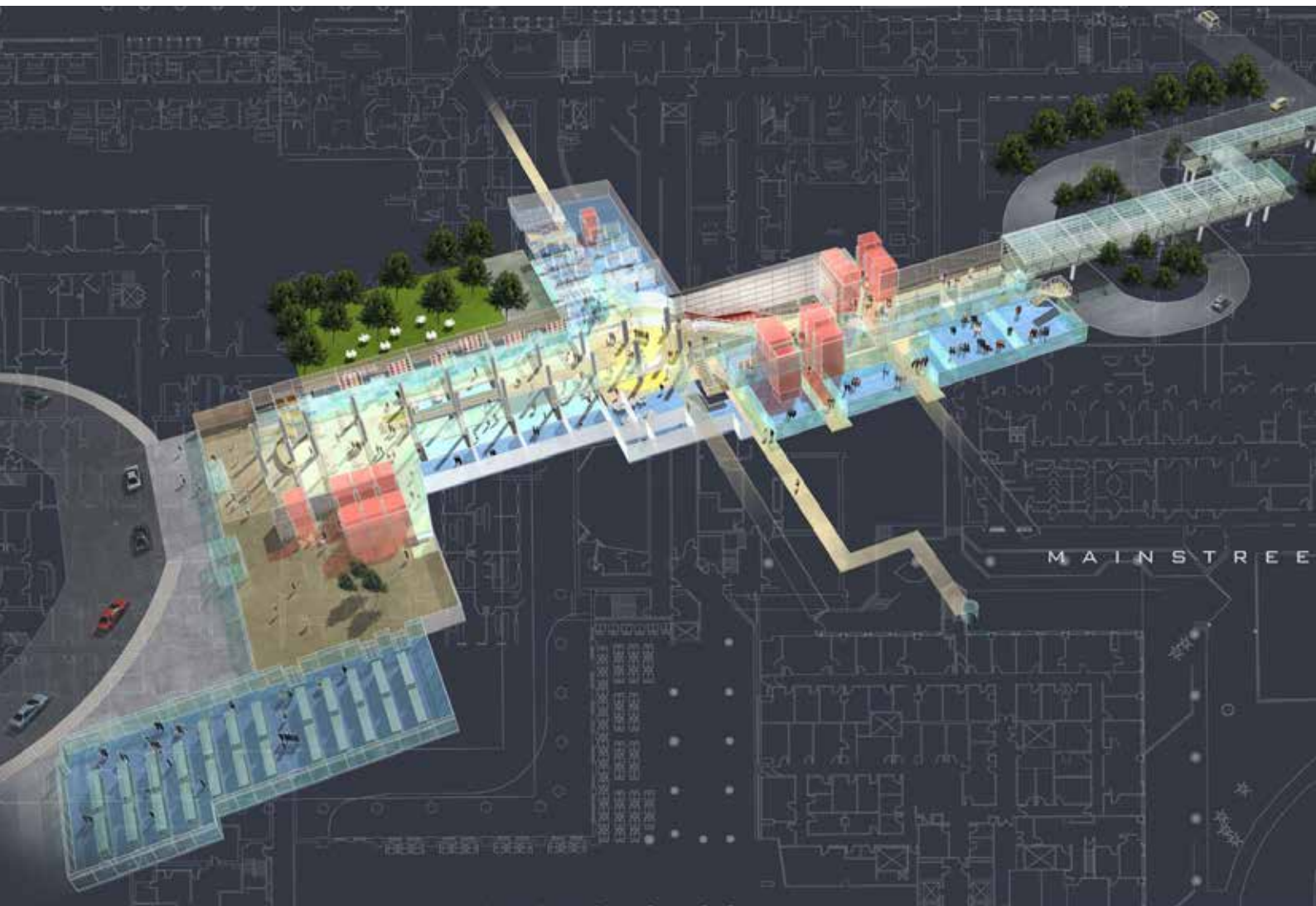
Status Completed in 2012

Client St. Joseph's Health Centre

By replacing a largely vacant wing on the north end of the site, B+H created a new four-storey wing to accommodate the expanded Mother and Child Program which consists of Birthing, Post-Partum, Level II Neo-natal Intensive Care Unit, Pediatric Inpatient and Day Clinics, Child/Adolescent Mental Health Inpatient and Outpatient

facilities. As well, the Wing includes two 32-bed Surgical Inpatient Units, and a 28-bed Sub-Acute Care unit on the top floor. Features include secure outdoor terraces for Pediatric and Sub-Acute patient and staff use.





University Health Network

University and College Campus Studies

Location Toronto, Canada

Size 1,000,000 ft² | 92,900 m²

Status Completed in 2001

Client University Health Network

This 1,000,000-square foot project involved a Master Plan Study for the long-term growth of the overall campus, an Architectural Study for the integration and adaptive reuse of existing research and heritage buildings, and a Design Study for the development of the site into a leading-edge biotech research facility.



MaRS Centre Phase 2

Location Toronto, Canada

Status Completed in 2013

Client MaRS Discovery District

LEED® Canada-CS Gold Certified

This iconic, 21-storey research laboratory/office building is the final piece of the MaRS Centre in downtown Toronto. It will anchor the University Health Network (UHN) campus in the Discovery District, an area encompassing many hospitals and research institutions. Situated on a prominent street corner at University Avenue and College Street, the building is adjacent

to the seat of the provincial government, cultural and financial districts and world-class academic and medical institutions. With its concentrated volume of medical research laboratories, MaRS Phase II is designed to be a central point for the convergence of ideas and innovation between science, business and government.



University Health Network Phase 3-5

Location Toronto, Canada

Size 450,000 ft² | 41,800 m²

Status Completed in 2004

Client University Health Network

B+H as Architect and Prime Consultant and Perkins+Will as Associate Architect.

This \$40 million project focused on integrating the new ambulatory care facilities within the Norman Urquhart Building with the Eaton Wing and new Clinical Services Wing. The majority of work involved the Urquhart Building with extensive renovations from the basement to the 15th floor.

A key component was a new “main street” linking the Hospital from University Avenue to Elizabeth Street with retail, information and food court amenities. Overall, the project greatly enhanced circulation, consolidated ambulatory services and created a warmer ambiance.



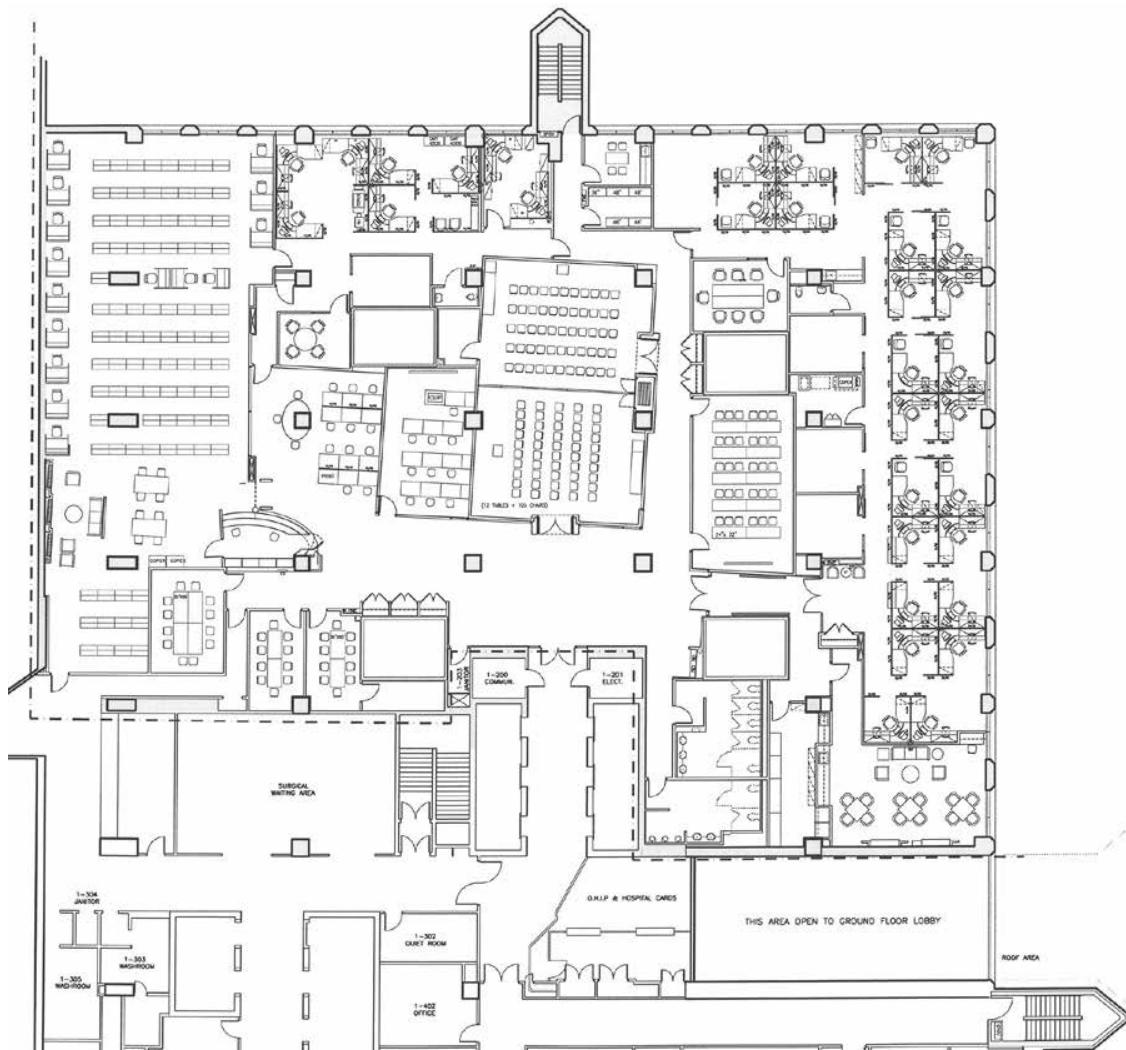


University of British Columbia Life Sciences Centre

Location Vancouver, Canada
Size 562,000 ft² | 52,200 m²
Status Completed in 2005
Client University of British Columbia

An international hub for medical research and education, the LSC opened in six phases only 29 months after breaking ground. The building is composed of three large five storey blocks, connected by atria, with two basement levels. A highly sophisticated building with interstitial floors and a complex program, the facility includes a range of different spaces including laboratories with Biosafety ratings of 2 and 3, a vivarium, wet and dry labs, two lecture theatres each seating up to 350 students, a 128 seat lecture

theatre and 42 classrooms of varying sizes. The LSC is one of the largest buildings in Canada to achieve LEED® Gold certification, which is regarded as particularly impressive due to the building's significant laboratory component; only a handful of laboratories in North America have achieved LEED® Gold rating. This project was completed by Bunting Coady Architects in joint venture with Diamond Schmitt Architects Inc.. Bunting Coady Architects merged with B+H in December 2010.



University Health Network

Centre for Research and Education, Health Sciences Library and Nursing Centre for Excellence

Location Toronto, Canada

Size 30,000 ft² | 2,790 m²

Status Completed in 2001

Client University Health Network

B+H was responsible for this 30,000-square foot renovation which created a centralized education facility at the Toronto General Hospital site including computer labs, workrooms, multimedia classrooms and lecture halls, and the relocation of the main health science library.



MINIS



MIDDLE EAST AND NORTH AFRICA



Ministry of Interior Hospital

Location Doha, Qatar
Size 414,173 ft² | 38,478 m²
Status Design Complete

This 200-bed general hospital was designed to provide treatment for acute illness as well as promoting general public health and healthy lifestyle. It is conceived as a “hospital within a hospital” serving the needs of Qataris and their families along with a program and design that permits the secure treatment of men and women in the custody of the state of Qatar without impact on general use. The facility has been designed following

LEAN and evidence-based design principles. Outwardly, the facility is designed to project a fresh, innovative, welcoming image to reflect the high quality of care within the institution, while inside it creates a series of public and private indoor and outdoor spaces to foster communities of healing.





Hamad General Hospital

Location Doha, Qatar
Size 145,312 ft² | 13,500 m²
Status In progress

This project involves renovation and medical planning of the existing emergency department at the Hamad General Hospital. Space and equipment planning for specialized clinical areas such as the trauma zone, resuscitation zone, isolation rooms, see & treat areas and radiology / x-ray rooms have been coordinated with end-users to meet challenging deadlines for construction completion. The project scope encompasses the performance analysis of the existing

facility and the development of a design brief for the new emergency building which will also serve as a teaching hospital. The new area is designed to a 5-star service standard, while the new building construction phasing will ensure continuity of existing facility's operational activities during the construction period.



Kuwait University

Location Kuwait

Size 450 hectares

Status Completed in 2010

Client Turner

*Project Completed by Team Members while at HOK

Kuwait University City is a new institution in Kuwait intended to consolidate the five existing state university campuses into one new 450-hectare facility. The design concept for the 70-hectare Medical Campus at the west end of the new University is based on a research and program consultation exercise that involved future users of the campus in multiple workshop sessions.

Functional and academic relationships informed the distribution and adjacencies of the different colleges, and buildings are clustered to create intimate connecting open spaces. The consultation and interaction with the user groups resulted in the development of a flexible plan that will be adaptable to future requirements.



HUKM Children's Hospital, Kuala Lumpur, Malaysia



ADDITIONAL INFORMATION

Our Principals & Management Team

Management Team

Dan McAlister

Chairman

Bill Nankivell

Chief Executive Officer

Lisa Bate

Regional Managing Principal, North America

Karen Cvornyek

President and Regional Managing Principal, Asia

Steve Cavan

Chief Operating Officer

Jennifer Futol

Principal | Global Director, Marketing and Business Development

Doug Demers

Managing Principal, Seattle

Patrick Fejér

Principal | Design

Peter Heys

Principal | Interior Design

Phillip Jones

Managing Principal, Middle East

Bruce Knapp

Managing Principal, Vancouver

Robert Marshall

Principal | Global Director, Planning & Landscape

Catherine Siu

Managing Director, Hong Kong

Jeffrey Chow

Managing Director, Vietnam

Lian Miew Ching

Senior Associate | Design Director, CHIL, Asia



Dan McAlister
Chairman



Bill Nankivell
CEO



Tõnu Altosaar
Senior Principal |
Director, MENA



Lisa Bate
Regional Managing
Principal,
North America



Mark Berest
Principal, Toronto



Ralph Baumann
Principal, Shanghai



Mohsen Boctor
Principal, Toronto



Steve Cavan
Chief Operating
Officer



Karen Cvornyek
President & Regional
Managing Principal,
Asia



Doug Demers
Managing
Principal, Seattle



Ian Donlan
Principal,
Shanghai



Emultaz Elbrabaa
Principal, Singapore



Patrick Fejér
Principal | Design



Alan Fraser
Principal, Toronto



Jennifer Futoi
Principal | Global
Director, Marketing &
Business Development



Peter Heys
Principal |
Interior Design



Tom Hook
Principal, Toronto



Jim Huffman
Principal | Senior
Design Director



Phillip Jones
Principal | Managing
Director, MENA



Bruce Knapp
Managing Principal,
Vancouver



Stéphane Lasserre
Principal, Singapore



Olivier Lopion
Principal, Singapore



Coco Lin
Principal, Shanghai



Stephen Herscovitch
Principal, Toronto



Robert Marshall
Principal | Global
Director Planning
& Landscape



Chris McQuillan
Principal, Toronto



Paul Morissette
Principal, CHIL,
Vancouver



Adèle Rankin
Principal, CHIL,
Vancouver



Stéphane Raymond
Principal, Toronto



Sonny Sanjari
Principal, Toronto



Sam Shou
Principal, Shanghai



Alex Stanichevsky
Principal, Toronto



David Stavros
Principal, Toronto/
Asia/MENA



Kevin Stelzer
Principal, Toronto



Susanna Swee
Principal | Executive
Vice-President, Asia



Guy Walter
Principal | Director of
Planning & Landscape,
Asia



Mario Sarandi
Principal, Toronto



Celine Wang
Principal, Shanghai



Eddie Wu
Principal | Director
of Landscape
Architecture



Jeffrey Chow
Managing Director,
Vietnam



Catherine Siu
Managing Director,
Hong Kong



Lian Miew Ching
Senior Associate
| Design Director,
CHIL, Asia



The Americas

Calgary · Seattle ·
Toronto · Vancouver

Asia

Hong Kong
Ho Chi Minh City
Shanghai · Singapore

The Middle East

Dubai

www.bharchitects.com